

West Coast German Shepherd SC

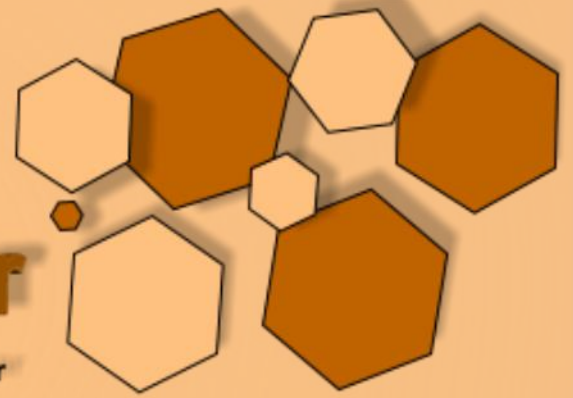
Invitational Work Week

March 2-7 2010

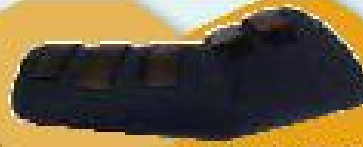


DogSport Gear

The right training starts with the right gear



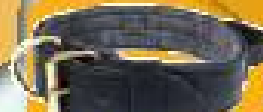
Schweikert
Hunde aus Deutschland



Hidden Sleeve



Clatter Sticks



Leather & Felt Collar



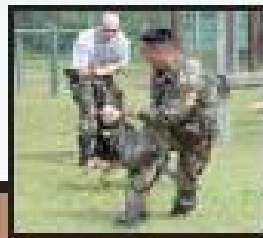
Leather Muzzle



Biting Toy

Training K9s takes good trainers and good handlers, but it all starts with the best gear.

Visit www.dogsportgear.com or Call 888-856-2076 to order the best gear on the market.



Electronic Collar

DogSport Gear

The Right Training Starts with the Right Gear

Phone: 888-856-2076

E-mail: dogsportgear@telus.net

Website: www.dogsportgear.com

We Ship
WORLDWIDE

www.dogsportgear.com

From the Executive

On behalf of the members of the West Coast German Shepherd SC, We wish all the delegates and corporate sponsors a warm and heart felt welcome. We sincerely hope you will enjoy your time here at the WCGSSC. We expect that you will make new friends and leave with great memories, new ideas and an increased passion and excitement for the sport and the German Shepherd Dog.

This event is special to us here in the WCGSSC because it highlights the tradition of contributing to the dog sport that was passed on to us by some very special people. It is our way to honour all of those who encouraged us, taught us, promoted us and who donated their precious time and knowledge to help us understand the beauty of the sport and the German Shepherd dog. They did it for the love of the sport, and for the camaraderie that it brings, without reservation and without a price.

To continue that tradition we in the West Coast GSSC all donate our valuable time from our work, our families and our training to host this event without fees annually. The members of the West Coast club believe strongly in the tradition of sharing their training with others who are interested in improving the sport and the way the sport is presented and perceived. We believe that sharing our success and knowledge will encourage others and promote a positive perception of the training, competing and breeding of working dogs. We do it to preserve the true heart of the sport.

Again this year we continue our campaign to raise funds from our activities to donate a K9 vest and a young German Shepherd dog to a police K9 unit in BC. A portion of the proceeds from every West Coast GSSC event will go directly towards this objective.

We warmly welcome and extend a big thank you to all the business partners that have stepped up to support the event. Our support and promotion of their products and businesses ensures a strong and continued relationship in the future.

Lance Collins

*President
West Coast German Shepherd SC*

All about Work Week

The event is designed to immerse everyone attending in the sport for 5 days. We schedule the meals and evening social time immediately after the day's training because we want the social time after training to be an opportunity for everyone to relax together and review the events of the day.

The social side is extremely important and an integral part of the event. We see this time as the best opportunity to get to know each other, discuss the events of the day, past experiences and special times in the sport. It gives everyone a chance to build relationships and establish contacts for the future and brings the Schutzhund sport world a little closer for everyone.

What will be covered?

Training and demonstrations of West Coast's techniques and philosophy will continue all day with plenty of opportunity to practice with your own dog under the guidance of experienced handlers. Multiple short workshops will be conducted daily on aspects of training, canine behavior, competing, handling, protocol, sportsmanship, judging, trial helper work and training helper work.

Who will be here?

Traditionally there are trainers, handlers, helpers and judges from Canada, USA, Australia and Europe providing the opportunity to discuss and exchange ideas with a cross section of experienced handlers.

Our sponsors

Work Week is a unique and significant event on the international dog event calendar.

The sponsors and corporate partners help to make this event more comprehensive and to expand our capabilities to reach a broader base within the communities we all reside.

We urge you all to support these businesses at every opportunity and let them know where you found out about them.

Our
Major
Sponsors



Driven to Deliver™
WWW.NORTHWESTTANKLINES.COM

The logo for Schweikert Hundesportartikel features a stylized line drawing of a dog's head in profile, facing right. Below the drawing, the word "Schweikert" is written in a large, bold, red serif font, and "Hundesportartikel" is written in a smaller, black sans-serif font below it, underlined.

Schweikert
Hundesportartikel

ALSTOM

The logo for Crusade Security features the words "crusade" and "security" in a lowercase, sans-serif font. "crusade" is in orange and "security" is in black. The text is enclosed within a circular graphic element that is partially open at the top.

crusade
security

The logo for DogSport Gear.com features a blue rectangular background. On the left side, there is a red paw print icon. To the right of the paw print, the text "DogSport Gear.com" is written in a white, bold, sans-serif font. Below the main text, the tagline "The right training starts with the right gear." is written in a smaller, white, sans-serif font.

DogSport Gear.com
The right training starts with the right gear.

***U.S.A Pacific Northwest Regional
2009 Champion***



Dago vom Sattelberg

Hips OFA Good, Elbows OFA Normal

Sire: Orry vom Gehrenmoos SchH 3 (V5 WUSV)

3x WUSV, 1x FCI World Championship Competitor

Dam: Utta von den Jungen Hansen IPO 3 Kkl 1

Dago is a large dominant male bringing real power and aggression to protection, stopping helpers with every grip. He shows great enthusiasm and drive in all phases with his tracking being calm and focused.

“full hard dominating grips”- Guenther Diegel (SV) 2009 U.S.A. Nationals

- **5 X SchH 3, highest score 90 97 99 (Norbert Freezer SV)
Pacific Northwest Regional SchH 3 Champion 2009
Multiple National and Regional Championship competitor**

Available for stud to approved bitches

Contact: Mark Gomersall

mcomersall@comcast.net

Basko vom Rohnsaler Bach

SG SchH3 FH KK1 Hips: OFA Good Elbows: normal

Sire: Tom van't Leefdaalhof SchH 3 IP3 (World Champion)

Dam: Igruschka von Karthago SchH 3

Line breeding: none



Intimidating

“he hunts for the helper”

F.Mensing GSSCC/SV



For more information contact:

Ted Gerela

tgerela1@telus.net (604) 534 6117

Research demonstrates benefits of Schutzhund training for police dogs

Recent research demonstrated the beneficial effect of Schutzhund training on police dogs, in terms of minimizing bite ratios (a measure of the frequency with which police dogs bite suspects). The researcher concluded that this was due to the fact that Schutzhund is a complex activity, which demands high levels of training and obedience. This is a significant finding which demonstrates that Schutzhund is high level training that increases control, and which can minimize inappropriate bites.

Introduction

Police dogs can perform a variety of tasks that are very important for law enforcement and the community. Dogs can be used to locate suspects or evidence, and they can detect contraband such as drugs and explosives/firearms. Police dogs can also be used to apprehend suspects by biting and holding them.

However, using a police dog to apprehend someone by biting is a significant use of force, and inappropriate bites can lead to complaints or lawsuits, as well as damaging the relationship between the community and the police.

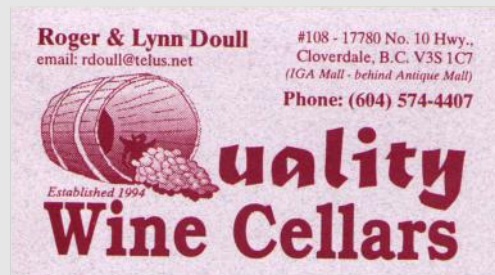
The research study

Research was conducted to determine whether there were any variables which were significantly related to high or low bite ratios in selected police departments in the USA. Bite ratios refer to the number of suspect apprehensions where the suspect was bitten by a particular dog team, as a proportion of all the suspect apprehensions of that dog team. Bite ratios or percentages can be used as an early warning system for identifying handler/dog teams who may require more training.

The study was conducted on 181 dog handler teams in Florida, USA. Various factors of interest were evaluated such as: breed of dog (German Shepherd or Malinois), whether the dog had any Schutzhund training, and a number of other training variables, including whether the dog was currently trained and deployed with a 'bark and hold' versus a 'find and bite' suspect indication. Analyses were conducted to determine whether any of these variables were significantly correlated with bite ratios.

Results and conclusions

The results found that police dogs which had some Schutzhund training were associated with significantly lower bite ratios (a positive finding) and that German Shepherds were associated with lower bite ratios than Malinois (a positive finding for the German Shepherd breed).



Roger & Lynn Doull
email: rdoull@telus.net

#108 - 17780 No. 10 Hwy.,
Cloverdale, B.C. V3S 1C7
(IGA Mall - behind Antique Mall)
Phone: (604) 574-4407

Established 1994

Quality Wine Cellars



CO-OP **ENERGY PLUS FEED**

Otter Farm & Home Co-operative

P.O. Box 4200
3600 - 248th Street
Aldergrove, BC Canada
V4W 2V1

Feed Store (604) 607-6901
Bulk Feed Orders (604) 607-6900
Switchboard (604) 856-2517
Toll Free 1-800-863-6038
Feed Fax (604) 607-0953



SURREY MEAT PACKERS
Natural Raw Diet For Dogs

Luigi De Mutiis
Owner

6050 176th St. Surrey, BC
(CLOVERDALE FAIRGROUNDS)
Tel/Fax: 604.574.5241 Toll Free: 1.866.220.8869
www.surreymeatpackersltd.com Idemutiis@hotmail.com

Continued

Research demonstrates benefits of Schutzhund training for police dogs

According to the author, the fact that Schutzhund training was associated with lower bite ratios was explained by the fact that Schutzhund involves very complex functions and demands high levels of obedience and training of the dog. Therefore this additional level of training and control minimized the frequency of inappropriate bite incidents.

Somewhat surprisingly, the results also showed that police dogs with a 'hold and bark' indication had *higher* bite ratios than those with 'find and bite' indications. This may have been due to the fact that 'hold and bark' type dogs require more training which had not been maintained by the department, or that these dogs had only recently been converted to 'hold and bark' (following a US Department of Justice recommendation), and were not yet thoroughly competent in this type of indication.

It may also be that 'bark and hold' canines were deployed in situations where 'find and bite' dogs were not deployed.

The author of the study also suggested that police agencies with less experienced handlers and trainers would do well to choose German Shepherds rather than Malinois.

Reference

Mesloh, C. (2006) Barks or bites? The impact of training on police canine force outcomes, *Police Practice and Research*, Vol.7, No.4, pp. 323-335

Charlotte Johnson Memorial Award

This award encompasses much of what Charlotte contributed to the West Coast GSSC.



It is presented to the person(s) who contributes to the sport of schutzhund, often going unnoticed and unrecognized.

Always with a positive attitude, from the development of training equipment, helping in the kitchen, to building of the club in spirit or by hand. Quietly encouraging others to do their best.

***Not always in the forefront,
but always in our hearts***

2007
Nick
Doktor

2008
Ros
Jamieson

2009
Jane
Holowaty

2010

TRACKING BASICS

In order to have a top tracking dog capable of high performances in schutzhund competition, there must be an ideal balance between a dog who is motivated to search and one who knows that it *must* search, and in a very particular and precise way.

To have a dog that will perform consistently at a high level no matter what (e.g. after traveling long periods, under adverse weather and terrain conditions), the dog must know that it has to track when required to do so by the handler and that it must track in a particular way (slow, calm, intense). This ultimate performance is



taught using the same learning and training principles that are used in all other exercises with the dog.

There are two main time periods in the dog's tracking development – the first is when tracking is done motivationally, as with a young dog or puppy, to introduce the idea of searching for a reward to the dog. The second stage starts when the dog is taught articles, in the form of an obedience aspect within the track. During this stage the dog learns that it must track and it must indicate the articles. After this, the rest of the dog's training in tracking consists of setting up strategically increasing challenges to the dog to develop skills in searching and problem solving. This is done in a systematic and progressive way.

The beginning tracks for a puppy or young dog consist of laying a circle track with food drops all along the track. The handler then brings the puppy to the middle of the circle and quietly waits and watches. As the puppy moves around it will come across the track scent and the food and will begin to search. The puppy will quickly learn, without any influence from the handler, that to follow the track scent brings it success in the form of food, and to leave the track scent leads to nothing.

As the puppy or young dog gains a little experience, it becomes a simple matter to extend the track and to lay opposing semicircles – essentially creating a serpentine track. All these initial tracks allow the dog to learn to search on its own, without interference from the handler and, importantly, to follow a curving track rather than to just rush ahead in a straight line. As the young dog develops, these serpentine tracks are increased in length, with the proviso always being of course that the handler needs to know where the track is. During these tracks the dog is developing the skills of searching and relocating the track if it has inadvertently lost it, and developing a strong positive association with tracking.

At this stage the obedience aspects of tracking are introduced. This involves teaching the articles, and this is a major transition phase for the dog in tracking. In the previous stage the dog has learned that tracking is fun and rewarding and has developed some basic searching skills.

Continued on next page